

Adult Social Care & Health Overview & Scrutiny Committee

Health & Wellbeing Board Update July 2018

Cllr Izzi Seccombe

Leader of the Council and Chair of the HWB Board

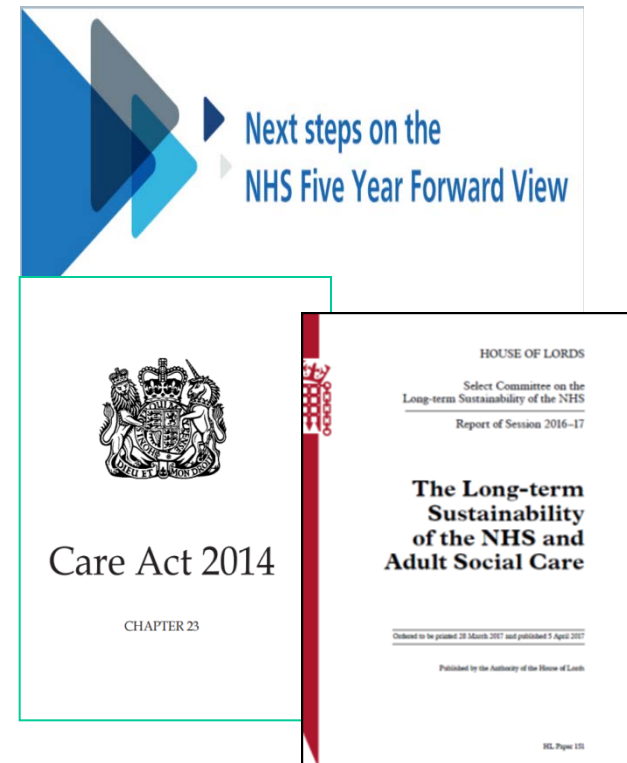
Item 4

Aim of the session

- Provide some context on Health and Wellbeing
 - National level
 - Warwickshire and Coventry level
 - Local developments
- Health and Wellbeing Boards
 - Critical role of Members in influencing the health and wellbeing of Warwickshire people

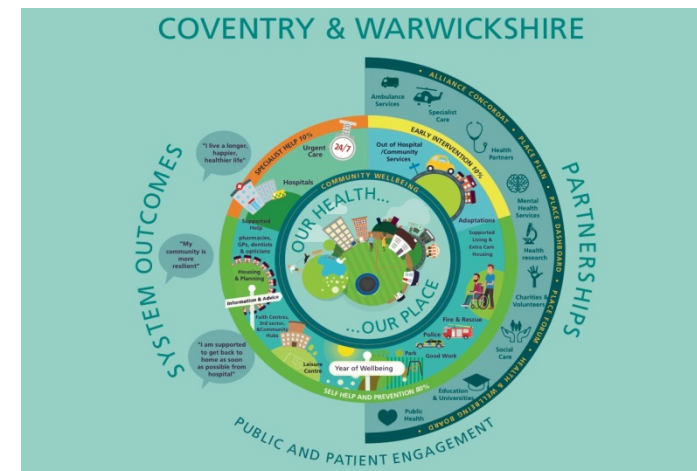
National Context

- NHS Five Year Forward View outlines 3 main issues - the 'Triple Aim':
 - Health and wellbeing gap
 - Care and quality gap
 - Funding and efficiency gap
- Sustainability and Transformation Partnerships (STP)
 - Set up to address health & care gaps locally
 - 'Better Health, Better Care, Better Value' programme in Coventry & Warwickshire
 - Moving to 'Integrated Care Systems'
- Social Care Green Paper
 - Sustainability of health & social care
- Funding Announcement for NHS



Warwickshire & Coventry Context

- Partnership formed with Coventry
 - Joint Health & Wellbeing Boards
 - Now called the ‘Place Forum’
 - Meets 3 times a year
- Alliance Concordat & system design show how we will work together to make improvements
 - “We will do everything in our power to enable people across Coventry & Warwickshire to pursue, happy lives and put people and communities at the heart of everything we do”
- Year of Wellbeing 2019
 - to promote wellbeing and healthy lives across Coventry & Warwickshire



Warwickshire Health & Wellbeing Board

- Health & Wellbeing Boards were formed following the Health and Social Care Act 2012
 - to enable leaders from the health and care system to work together to improve the health and wellbeing of local people and reduce health inequalities
- Warwickshire Health & Wellbeing Boards (HWBB) meets 3 times a year
- Statutory duties & reporting
 - Joint Strategic Needs Assessment
 - Pharmaceutical needs Assessment
 - Commissioning Plans
 - Reporting of key programmes e.g. Better Care Fund



Warwickshire key partners in Health & Care



Local authorities

Providers and commissioners of Public health and Adult Social Care services + wellbeing related services



CCGs

Commissioners of services through provider and GP network



Health providers

GPs; community health services; hospitals; ambulance

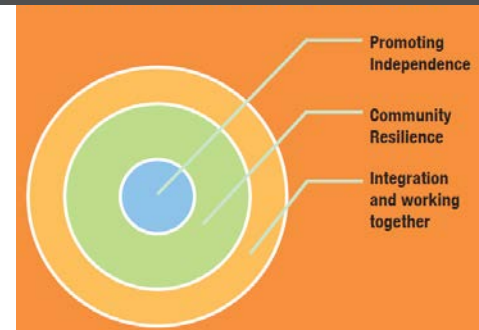
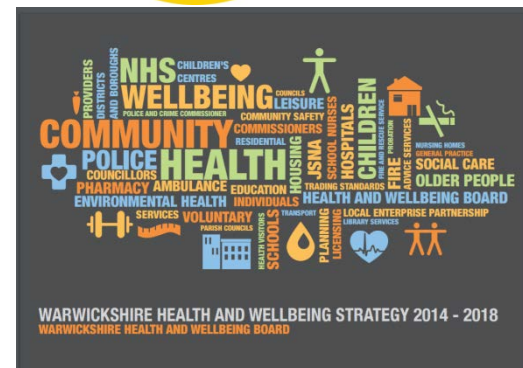


Wider partners

Critical part of holistic approach to health and wellbeing

Health & Wellbeing Strategy

- 5 yr plan produced in 2014
- Signed up to by all key stakeholders
- 3 Core priorities
 - Promoting independence
 - Community resilience
 - Integration and working together
- Progress is reviewed annually
- Supported by HWB Exec group



Joint Strategic Needs Assessment

- Looks at **current** and **future** health and well-being needs of local population, to inform delivery of health, wellbeing & social care services
- Place-based approach for 2018-20
 – 20 geographies
- JSNA work is owned by the Health & Wellbeing Board and led by the Insight Service at WCC
- All partners need to contribute to ensure it gives a holistic view
- Local Members as sponsors



Fitting it all together

- **Organisational bodies** *e.g. Council and Cabinet*
 - Decision making bodies for each constituent organisation
- **Health Wellbeing Board**
 - Advisory board with limited statutory functions, but significant influence
- **Health and Wellbeing Executive**
 - Chief Executive/director level group which supports the HWB Board
- **Health and Wellbeing Local Members**
 - District/Borough lead Members Group chaired by WCC Portfolio lead
- **HOSC**
 - Statutory body with remit to scrutinise health related issues
- **Safeguarding Boards (Children and Adults)**
 - Independent boards with statutory safeguarding role
- **Partnership Boards** *e.g. Community safety, MASH*
 - Ongoing partnership working
- **Programme Boards** *e.g. STP, BCF*
 - Focused on specific areas



How can you help?

Key Role of Elected Members

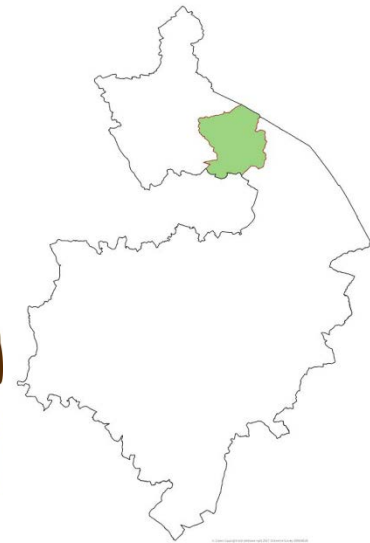
- Represents local interests
- Balance local and system needs
- Understand what works in your communities
- Work across organisations and in partnership



Health and
Wellbeing



Warwickshire
County Council



*Working for
Warwickshire*